

# Dispensing factsheet: Is this item allowed?

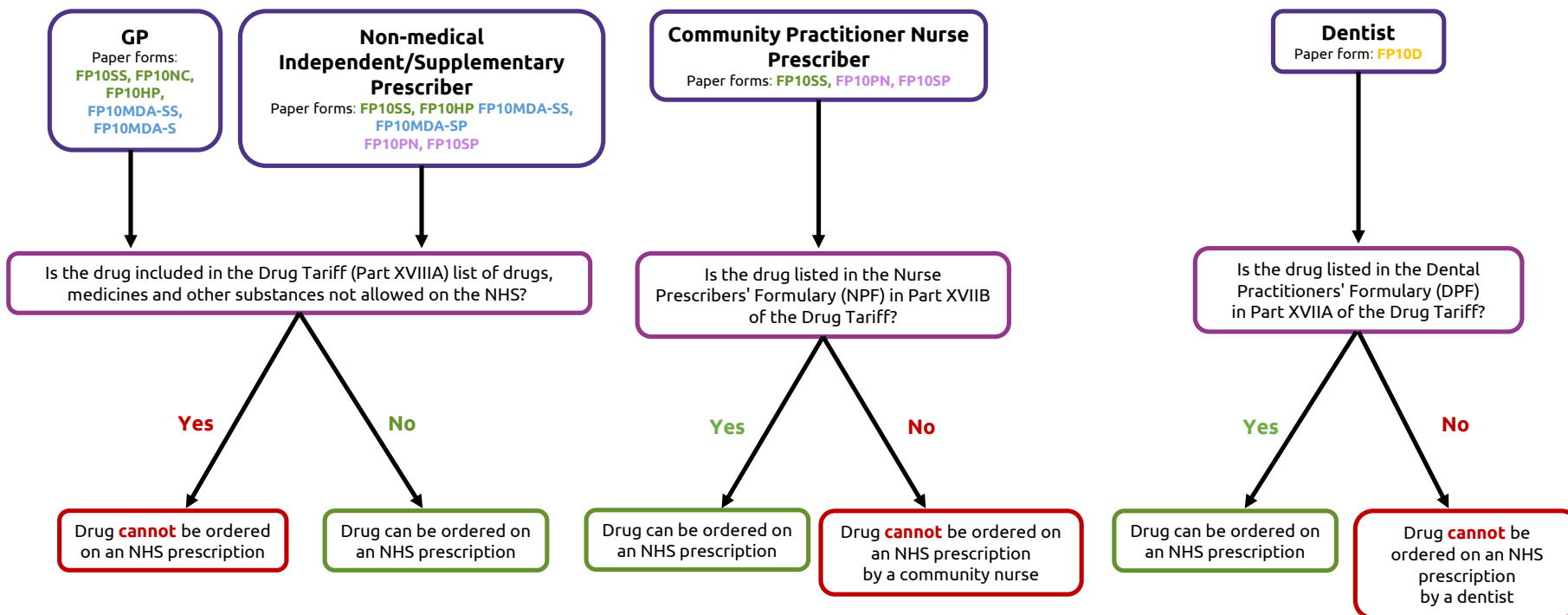
PSNC's Dispensing & Supply team are regularly asked by pharmacy staff if specific products are allowed on NHS prescriptions. This factsheet outlines the checks required by dispensing staff to establish whether a product is allowed on the NHS.

## Drugs

Drugs refers to medical products and non-medical substances such as food supplements and cosmetics. Subject to prescribing rights, any drug or non-medical substance such as food supplements or cosmetics may be prescribed on an NHS prescription form if the product(s) do not appear in **Part XVIII A (drugs, medicines and other substances that may not be ordered under the NHS) of the Drug Tariff**.

## Is the item allowed on an NHS Prescription?

**Drugs – Includes medicinal and non-medicinal substances (Food supplements and Cosmetics)**



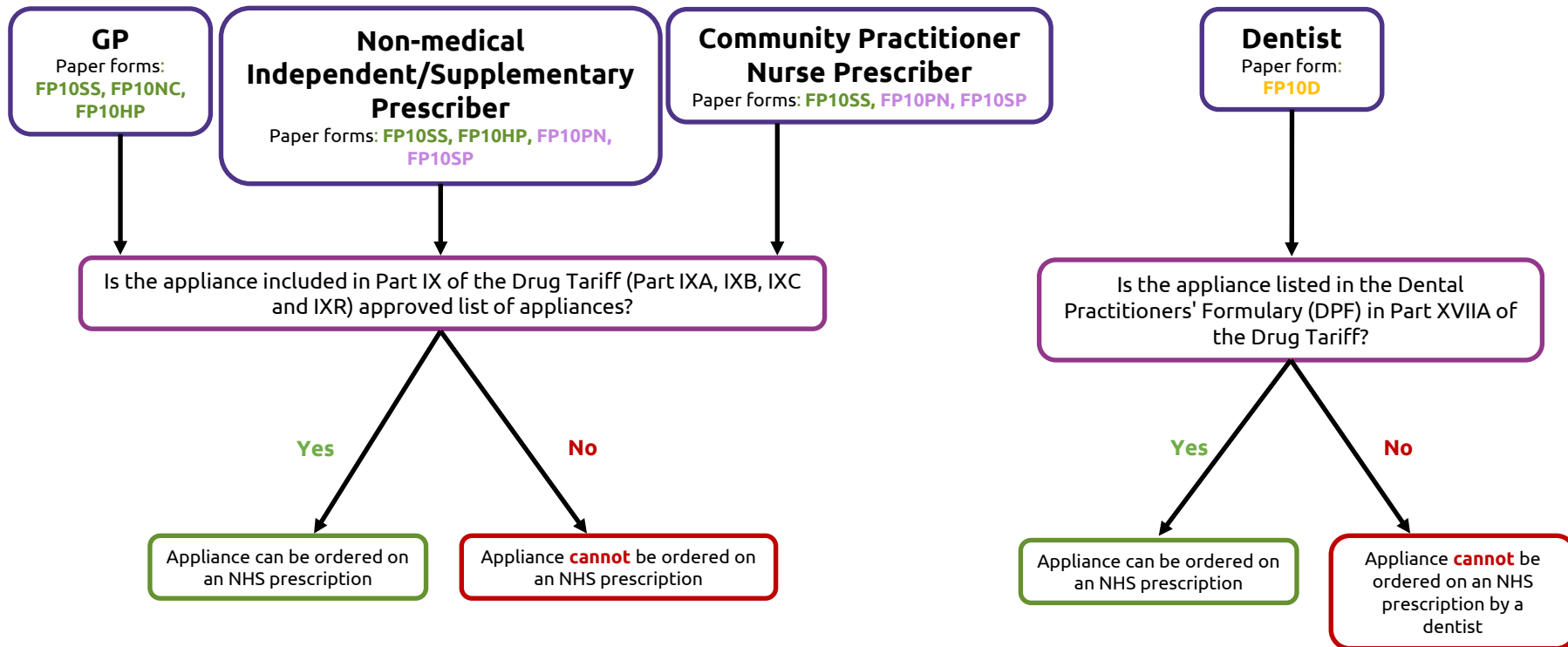
Different types of prescribers hold different prescribing rights. It is important for pharmacy staff to identify whether the prescriber holds the relevant registration(s) to issue a prescription for the requested item(s). See [psnc.org.uk/prescribing](https://psnc.org.uk/prescribing) for more information.

## Appliances

Appliances can only be prescribed on NHS prescriptions if the product is listed in Part IX (the Appliances section) of the Drug Tariff. Prescribed appliances must be an exact match for the listing in the Drug Tariff; for example, the specific type and pack size must correspond with a Drug Tariff listed product. Appliances can be identified by a **CE mark** which indicates that the product is an appliance/medical device. The CE mark can normally be found on the packaging of a device, on the instruction leaflet and on the device itself (where practical). See [psnc.org.uk/appliances](https://psnc.org.uk/appliances) for more information.

# Is the item allowed on an NHS Prescription?

## Appliances



Correct as of December 2020

If you are unsure whether a product is allowed, you can contact the PSNC Dispensing and Supply Team 0203 1220 810 or [info@psnc.org.uk](mailto:info@psnc.org.uk). For information on prescriber type EPS codes see our factsheet on page 10.

For more information and additional guidance on identifying whether an item is allowed see our [Is It Allowed](#) page.

